

SCIENTIFIC REPORTS



OPEN

Comparison of the Biological Characteristics of Mesenchymal Stem Cells Derived from the Human Placenta and Umbilical Cord

Mingjun Wu¹, Ruifan Zhang², Qing Zou¹, Yaoyao Chen¹, Min Zhou¹, Xingjie Li¹, Ran Ran¹ & Qiang Chen^{1,3}

Mesenchymal stem/stromal cells (MSCs) derived from placental tissue show great therapeutic potential and have been used in medical treatment, but the similarity and differences between the MSCs derived from various parts of the placenta remain unclear. In this study, we compared MSCs derived from different perinatal tissues, including the umbilical cord (UC), amniotic membrane (AM), chorionic plate (CP) and decidua parietalis (DP). Using human leukocyte antigen (HLA) typing and karyotype analysis, we found that the first three cell types were derived from the foetus, while the MSCs from the decidua parietalis were derived from the maternal portion of the placental tissue. Our results indicate that both foetal and maternal MSCs share a similar phenotype and multi-lineage differentiation potential, but foetal MSCs show a significantly higher expansion capacity than do maternal MSCs. Furthermore, MSCs from all sources showed significant differences in the levels of several paracrine factors.

Human placenta is well known to not only play a fundamental and essential role in foetal development, nutrition, and tolerance, but also function as a bank of MSCs. Placental tissue can be easily obtained as medical waste. Placenta-derived MSCs can be procured from this medical waste, free of invasive procedures such as adipose tissue collection, and there are no ethical controversies surrounding its use unlike the embryonic stem cells. Considering the complexity of the placenta, this tissue can be conceptually divided into the foetal side, consisting of the amnion, chorion and umbilical cord, and the maternal side, consisting of the decidua. Numerous reports have been published on the MSCs that originate from different parts of the placenta^{1–11}. Many of the perinatal sources, including the amniotic membrane (AM), chorionic plate (CP), decidua parietalis (DP) and umbilical cord (UC), have advantages over adult sources such as BM in terms of their ease of availability, lack of donor site morbidity, naivety of cells, abundance of stem cells in tissues, and high capacity for proliferation^{7,12,13}.

The placenta has been largely used to study MSCs, and several studies have already compared the features (phenotype and function) of MSCs isolated from different placental tissues^{14–24}. However, the origin of MSCs derived from all sources (AM, CP, DP and UC) of the placenta have not been determined, and there is a lack of comprehensive comparisons between MSCs. Moreover, optimal sources for specific clinical applications remain to be identified²⁵. The hypothesis that all MSCs, regardless of their origins, are identical in their quality and function ignores their differences in biology and potential therapeutic use, which cannot be defined and characterized by current methods *in vitro*²⁶. MSCs are routinely defined *in vitro* by cell surface antigen expression and differentiation potential. These features are also known as the minimal MSC criteria proposed by the International Society for Cellular Therapies (ISCT)²⁷. However, these minimal criteria are not specific for MSCs and cannot distinguish the connective tissue cells that share the same properties²⁸. Cell-cell adhesion mediated by vascular cell adhesion protein 1 (VCAM-1) is known to be critical for T cell activation and leukocyte recruitment to the site of inflammation. Therefore, VCAM-1 plays an important role in evoking effective immune responses. VCAM-1

¹Research Center for Stem Cell and Regenerative Medicine, Sichuan Neo-life Stem Cell Biotech INC, Chengdu, Sichuan, China. ²Department of Ophthalmology, Sichuan Academy of Medical Sciences & Sichuan Provincial People's Hospital, Chengdu, Sichuan, China. ³Center for Stem Cell Research & Application, Institute of Blood Transfusion, Chinese Academy of Medical Sciences and Peking Union Medical College, Chengdu, Sichuan, China. Mingjun Wu and Ruifan Zhang contributed equally to this work. Correspondence and requests for materials should be addressed to Q.C. (email: qchen0810@yahoo.com)

is also reported to be a biomarker for a subpopulation of chorionic villi-derived MSCs with unique immunosuppressive activity¹². This finding suggests that a better understanding of the functional properties indicating the potential impact on future clinical applications may be achieved by identifying the molecular pathways and cytokine profiling of MSCs^{19,29}.

In our study, we compared MSCs derived from the UC, AM, CP of foetal origin and the DP of maternal origin in the placenta to understand their similarities and differences. The morphology and immunophenotype (assessed by flow cytometry) were analysed. HLA typing and karyotype analysis were carried out to determine the origin of the MSCs. Growth kinetics were evaluated using the population doubling time (PDT) and CCK-8. Cytokine secretion function was quantitatively analysed using the enzyme-linked immunosorbent assay (ELISA) kit. Our data suggest that VCAM-1 could be used as a biomarker to determine the CP-derived MSCs.

Results

Identification of placenta-derived MSCs. According to the ISCT criteria, the MSCs derived from AM, CP, DP and UC (Supplementary Fig. S1a,b) exhibited typical fibroblastoid, spindle-shaped morphology and displayed a high capacity to adhere to plastic when maintained in standard culture conditions using tissue culture flasks (Fig. 1a, top panel). There were significant differences in the cell isolation rates from different sources, ranging from 0.34 to 1.52 million single cells per gram tissue (Fig. 1b). According to our data, MSCs cultured from all sources could be established with a comparable positive rate.

After 21 days of induction with the respective induction media, AM-MSCs underwent low-level trilineage differentiation. In contrast, the three other types of MSCs showed relatively higher differentiation potential (Fig. 1a). CP-, DP-, and UC-MSCs from all three donors differentiated into all three induced lineages (adipocytes, osteoblasts and chondroblasts). AM-MSCs from donors 1 and 2 showed only adipogenic and osteogenic differentiation potential, and only donor 3 showed trilineage differentiation potential (Supplementary Fig. S2).

To determine the most significant differences among these MSCs, we compared the phenotypes of MSCs isolated from the human placenta using identical methods. Each type of MSC was tested in 10 donors. A series of cell markers was examined at passage 3 of *in vitro* cultivation, including the classical MSC phenotypes as defined by the ISCT criteria (CD14, CD34, CD45, CD73, CD90, CD105 and HLA-DR), embryonic stem cell markers (SOX2 and SSEA4) and VCAM-1, also known as CD106. AM-, CP-, DP- and UC-MSCs showed similar expression levels of MSC-specific surface markers (CD73, CD90 and CD105) and an absence of leucocyte, haematopoietic cell, or monocyte/macrophage markers (CD45, HLA-DR, CD34 and CD14) (Supplementary Fig. S3). All of these MSCs highly expressed the SOX2 and SSEA4 embryonic stem cell markers, as well as mesenchymal markers, including CD73, CD90 and CD105 (Supplementary Fig. S4). The most significant difference in their phenotype was the expression of CD106, which was expressed highly in CP-MSCs ($81.10 \pm 12.28\%$), moderately in UC-MSCs ($12.07 \pm 11.43\%$), and slightly in AM-MSCs ($4.27 \pm 4.39\%$). DP-MSCs did not express CD106 (Fig. 1c,d).

Origin determination. HLA analysis of the culture-expanded cells from the same placental sample ($n = 3$) showed that AM-, CP- and UC-derived MSCs were of foetal origin, and DP-derived MSCs were of maternal origin (Table 1). However, some of the culture-expanded DP-derived cell populations expressed both foetal- and maternal-specific alleles (data not shown).

To confirm that these MSCs in culture were derived from the foetal or maternal placenta, the cytogenetic karyotypes of the cells from the same placenta ($n = 4$) of male babies were analysed. XX sex chromosomes were detected in DP-MSCs, and XY chromosomes were detected in AM-, CP- and UC-MSCs (Fig. 2).

Growth characteristics. The growth curves of all MSCs show that the DP-MSCs grew the slowest (Fig. 3a). During cell proliferation, the MSCs were cultured up to passage 11. Based on our calculations of the cell population doubling time, the cell PDT of the UC-MSCs was 28.34 ± 2.89 h, and that of the AM-, CP- and DP-MSCs was 35.19 ± 9.28 h, 38.71 ± 9.27 h and 48.01 ± 8.26 h, respectively (Fig. 3b,c). Thus, the order of the growth rate of the cells was as follows (from the fastest to the slowest): UC-, AM-, CP- and DP-MSCs.

Secretion patterns of selected growth factors and cytokines. Secretion of paracrine factors, including human angiopoietin-1 (Ang-1), hepatocyte growth factor (HGF), insulin-like growth factor I (IGF-I), prostaglandin E2 (PGE2), transforming growth factor beta 1 (TGF- β 1), VCAM-1 and vascular endothelial growth factor (VEGF), in all MSCs was assessed using ELISA kits according to the manufacturer's instructions. MSCs from all sources showed significant differences in the levels of selected factors. AM-MSCs showed the highest secretion of PGE2 and TGF- β 1. CP-MSCs showed the highest secretion of HGF and VCAM-1. DP-MSCs showed the highest secretion of Ang-1 and VEGF and the lowest secretion of TGF- β 1, while UC-MSCs showed the highest secretion of IGF-I (Fig. 4).

Discussion

In this study, we performed a side-by-side comparison of 4 populations of MSCs derived from perinatal tissues, including AM, CP, DP and UC. In summary, this study resulted in the following major conclusions:

First, we analysed the origin of different perinatal tissue-derived MSCs. HLA typing and karyotype analysis confirmed that AM-, CP- and UC-derived MSCs were of foetal origin, and DP-derived MSCs were of maternal origin. Moreover, we observed significant differences in the proliferative potential among the 4 populations of MSCs, and the proliferation rate from the fastest to the slowest was as follows: UC-, AM-, CP- and DP-MSCs. The growth curve showed that the proliferative capacity of the MSCs of foetal origin was significantly greater than that of the MSCs of maternal origin.

Second, we found that MSCs derived from different perinatal tissues are not identical in terms of their biological properties. Although MSCs from all sources were shown to express similar surface markers according to the ISCT criteria and some pluripotency related markers; for instance, SOX2 and SSEA4, CP-MSCs show the highest

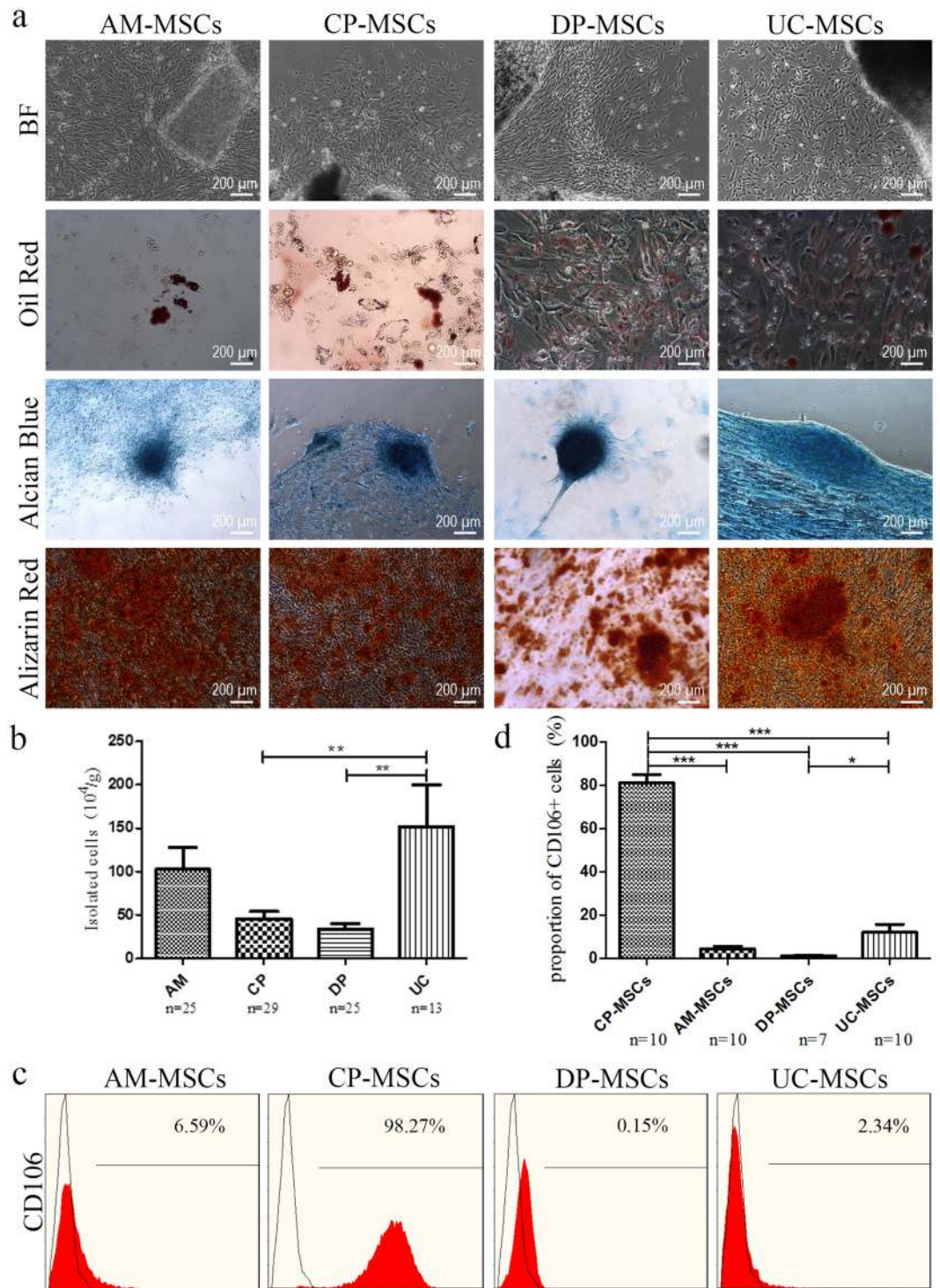


Figure 1. Characterization and isolation yield of different types of MSCs derived from perinatal tissues. **(a)** All MSCs exhibited a similar morphology and became positive for oil red O (adipocytic differentiation), alcian blue (chondrocytic differentiation), and alizarin red (osteocytic differentiation). **(b)** Original raw material, MSC isolation yield. Data are presented as the mean \pm SEM (* p < 0.05, ** p < 0.005). **(c)** Flow cytometric analysis of CD106 expression in different MSCs. **(d)** Statistical result of CD106 expression in different MSCs. Data are presented as the mean \pm SEM (** P < 0.0001).

CD106 expression compared to the other three MSCs, which displays a positive correlation with the immunosuppressive effect. CD106 is known to play an important role in embryonic development in the formation of the umbilical cord and placenta³⁰. Moreover, surface molecules, such as CD106 and CD54, are considered to be important for the immunomodulation of MSCs³¹.

Donor	Genotype	AM-MSCs	CP-MSCs	DP-MSCs	UC-MSCs
1	HLA-A	A24, -	A24, -	A11, A24	A24, -
	HLA-B	B39, B60	B39, B60	B13, B39	B39, B60
	HLA-DRB1	DR12, DR13	DR12, DR13	DR12, DR15	DR12, DR13
2	HLA-A	A2, A24	A2, A24	A24, -	A2, A24
	HLA-B	B75, B61	B75, B61	B8, B61	B75, B61
	HLA-DRB1	DR12, DR15	DR12, DR15	DR17, DR12	DR12, DR15
3	HLA-A	A2, A33	A2, A33	A2, -	A2, A33
	HLA-B	B13, B61	B13, B61	B13, B46	B13, B61
	HLA-DRB1	DR14, DR15	DR14, DR15	DR8, DR15	DR14, DR15

Table 1. HLA typing of culture-expanded MSCs from the same placental sample.

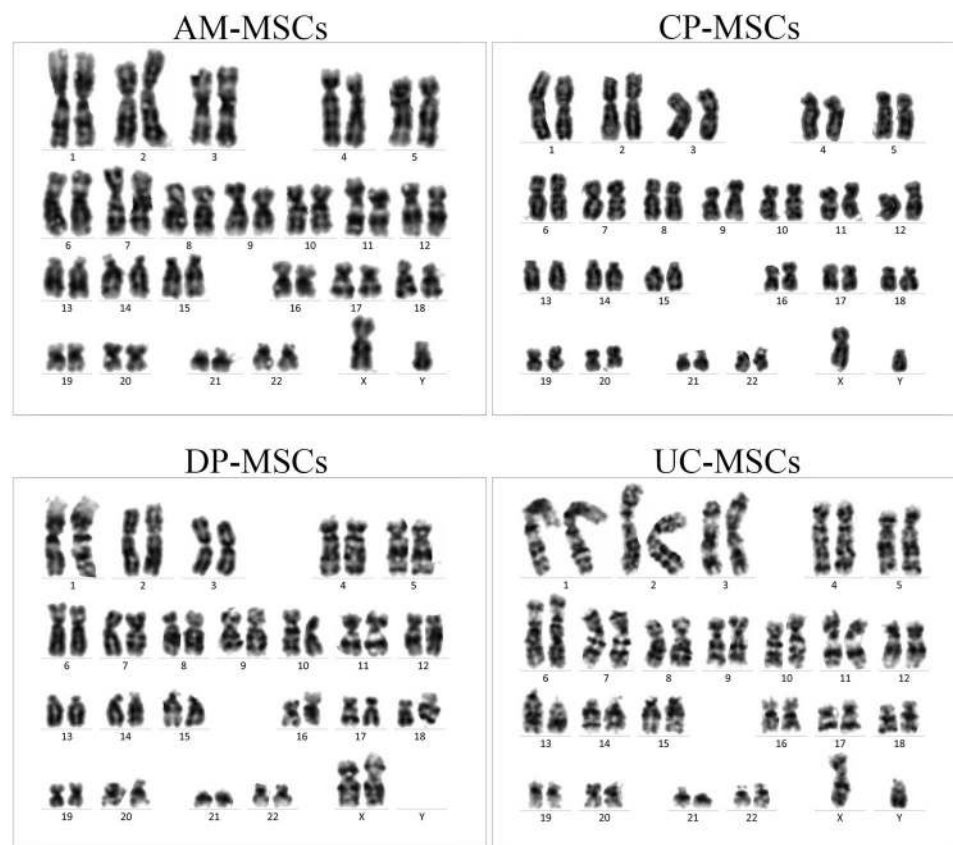


Figure 2. Karyotype analysis of different MSCs derived from different sources of the placenta of male babies (n = 3). G-band staining revealed that AM-, CP- and UC-MSCs were foetal cells exhibiting a normal 46, XY karyotype, and DP-MSCs were maternal cells exhibiting a normal 46, XX karyotype.

Third, MSCs derived from different tissues have been demonstrated in numerous studies to differentiate into cells in the mesodermal lineage, such as adipocytes, osteoblasts and chondroblasts^{32–35}. Our results demonstrated that there are quantitative differences between various populations of MSCs derived from different perinatal tissues with respect to their differentiation potential. Our data indicated that AM-MSCs underwent trilineage differentiation at a low level. Furthermore, the differentiation potential of foetal (AM origin) vs. adult (DP origin) MSCs in our work showed that the proliferative capacity of the adult (maternal) cells was significantly lower than that of the foetal cells which is inconsistent with their differentiation potential (Fig. 3, supplementary Fig. S2).

Fourth, the secretion patterns of selected growth factors and cytokines revealed that MSCs from all sources showed distinct differences in the levels of the selected factors. These factors were selected because multiple studies have shown that they are secreted by MSCs during inhibition of apoptosis, immunomodulation, anti-fibrotic processes, angiogenesis, chemotaxis and haematopoiesis induction/support *in vitro* or *in vivo*^{36–41}. Recent studies have demonstrated that the high expression of HGF and VCAM-1 in MSCs was associated with a favourable angiogenic potency and displayed therapeutic efficacy in hindlimb ischaemia^{42,43}.

In conclusion, our study compared MSCs derived from different perinatal tissues to better understand the similarities and differences among these cell types. The origin and purity of each cells was confirmed by HLA

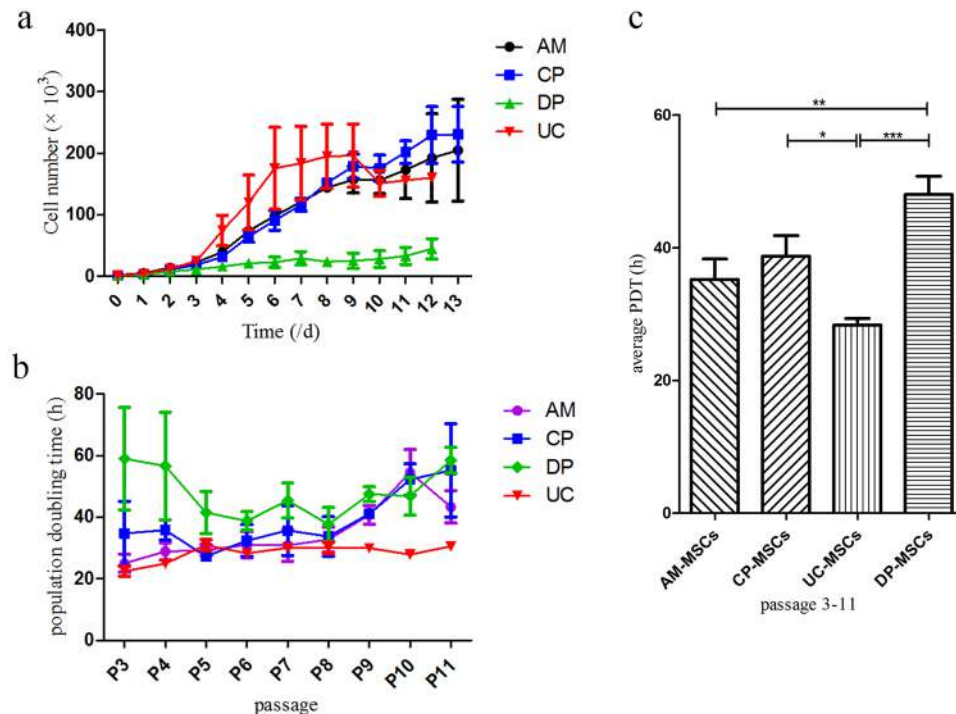


Figure 3. Proliferative potential of different sources of MSCs. The number of MSCs was counted each time following subculture from passages 3 to 11 ($n = 3$ donors). **(a)** Growth curves of different types of MSCs. **(b)** The population doubling time was also calculated based on cell counts. **(c)** Comparison of average population doubling time of different sources of MSCs following subculture from passages 3 to 11. Data are presented as the mean \pm SEM (* $P < 0.05$. ** $P < 0.005$. *** $P < 0.0001$).

typing and karyotype analysis and showed that the first three cell types were of foetal origin and the last cell type was of maternal origin from the placental tissue. Although both foetal and maternal MSCs have similar phenotypes and multi-lineage differentiation potential, foetal MSCs showed a significantly higher expansion capacity than did maternal MSCs, and furthermore, MSCs from all sources showed significant differences in the levels of selected paracrine factors. These findings may offer clues to the clinical application of different types of MSCs. For instance, AM-MSCs may be used in the treatment of premature ovarian ageing due to their higher secretion of PGE2 and TGF- β ¹⁴⁴; CP-MSCs display potential pro-angiogenic activity due to the higher secretion of HGF and VCAM-1⁴³ and could be used in angiogenic therapy; and DP-MSCs show advantages in the treatment of critical limb ischaemia because of the higher secretion of VEGF and Ang-1⁴⁵. Compared to AM-, CP- and DP-MSCs, UC-MSCs secreted higher levels of a wide range of selected paracrine factors. Thus, UC-MSCs may be a source of cell therapy to treat other diseases. Furthermore, it would be necessary to identify the ability of MSCs derived from different sources differentiating into various types of cells specifically into the three germ layers such as ectoderm (epithelial and neuronal cells), mesoderm (endothelial cells and cardiomyocytes) and endoderm (hepatocytes and insulin producing β -cells). More functional studies are required to confirm these findings and to obtain a further understanding of the biological differences of MSCs from various sources so that the most suitable MSCs for treatment of specific diseases can be verified and acquired.

Methods

Isolation and culture of MSCs from the human placenta and umbilical cord. The experiments involving human tissue were approved by the Research Center for Stem Cell and Regenerative Medicine, Sichuan Neo-life Stem Cell Biotech INC./ Center for Stem Cell Research & Application, Institute of Blood Transfusion, Chinese Academy of Medical Sciences and Peking Union Medical College (CAMS & PUMC). All the experiments were carried out in accordance with the approved guidelines. Human placentae ($n = 60$) and umbilical cords ($n = 13$) were collected from healthy, full-term, uncomplicated pregnancies. Written informed consent was obtained from the mothers and the donors.

First, UCs were dissected longitudinally, and the arteries and veins were removed. The remaining pieces were chopped mechanically. Second, the decidua parietalis attached to the maternal side of the human placenta was manually separated from the chorion. Third, the placental amnion attached to the foetal side of the human placenta was separated from the chorionic plate. Finally, the chorionic plate without the amnion and decidua basalis was separated from the human placenta. All of the above three tissues were washed thoroughly with phosphate-buffered saline (PBS; pH 7.4) to remove excess blood. The tissues were rinsed in PBS and were extensively minced. All of the explants, including the UCs, were transferred into 100 mm plates (Corning, USA). Complete culture medium (Dulbecco's modified Eagle's medium/nutrient mixture F-12, DMEM-F12 containing 10% foetal bovine serum, 100 mg/mL streptomycin and 100 U/mL penicillin) was added to the plates, and the

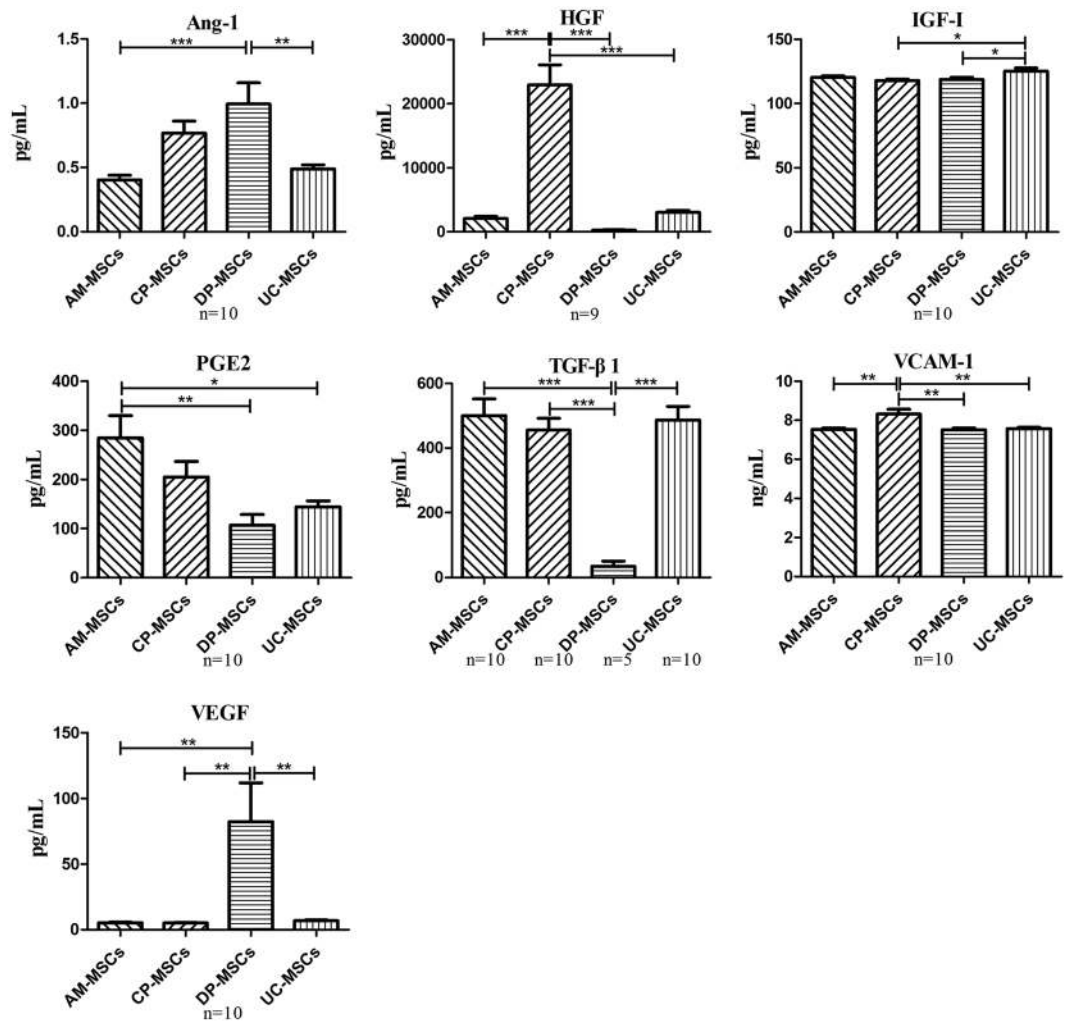


Figure 4. Comparison of the secretion patterns of selected growth factors and cytokines. Differences in the four sources were determined to be significant and were labelled with a star if the P -value determined using ANOVA followed by Tukey's test was <0.05 . Data are expressed as the mean \pm SEM (* $P < 0.05$. ** $P < 0.005$. *** $P < 0.0001$). Ang-1, angiopoietin-1; HGF, hepatocyte growth factor; IGF-I, insulin-like growth factor I; PGE2, prostaglandin E2; TGF- β 1, transforming growth factor beta 1; VCAM-1, vascular cell adhesion molecule-1; VEGF, vascular endothelial growth factor.

explants were cultured at 37°C in a 5% CO₂ incubator and left undisturbed to allow the cells to migrate from the explants. After 10–15 days, MSC-like cells were found around the fragments. MSCs were identified on the basis of their fibroblastic morphology and phenotypic characterization, which was performed after passage 3, and were used in subsequent experiments. The cell cultures at different time intervals were observed under an inverted phase contrast microscope (Leica DMI3000 B, Leica Microsystems Inc., Germany) and the images were captured using Leica Application Suite Version 3.8.0 software.

Determination of the maternal and foetal origin of MSCs. To analyse the origin of culture-expanded MSCs derived from the amnion, chorionic plate, decidua parietalis and umbilical cord, molecular HLA typing was performed on DNA obtained from expanded MSCs using PCR-SSP with an AllSet+ Gold SSP HLA-A\B\DRB1 kit (ONE LAMBDA, Canoga Park, CA).

Flow cytometry analysis. For phenotypic identification of the MSCs derived from all sources, a total of 1×10^6 cells were divided into aliquots in 1.5 mL microcentrifuge tubes, and the samples were centrifuged at $500 \times g$ for 5 minutes. Pelleted cells were washed twice in phosphate-buffered saline (PBS) supplemented with 0.2% foetal bovine serum (FBS) (Gibco, Life Technologies, USA). The cells were then suspended in 50 μ L of PBS with 1% bovine serum albumin (BSA), and the following cell surface epitopes were detected: anti-human CD73-PE, CD90-FITC, CD105-PE, VCAM-1-PE, CD166-PE, CD14-PE, CD34-PE, CD45-Pc7, HLA-DR-FITC (BD Biosciences, USA), SOX2-PE and SSEA4-PE (eBioscience, USA). Appropriate isotype controls were used for each antibody to assess for nonspecific antibody binding. The cells were then analysed using a flow cytometry instrument (FC500; Beckman Coulter, USA) and data processing software (FlowJo 10.0.7; TreeStar, USA).

Growth kinetics analysis. The proliferation of MSCs from P3 to P11 was assessed ($n = 3$). MSCs from all sources were inoculated on a six-well culture plate at a density of $7\text{--}10 \times 10^5$ cells/well, and the cells were counted until they reached 100% confluency. The PDT was calculated using the following formula:

$$\text{PDT} = (\text{CT} \times \ln 2) / \ln(N_f/N_i),$$

where CT is the cell culture time, N_i is the initial number of cells, and N_f is the final number of cells⁴⁶.

Proliferation assay. The proliferation of MSCs from all sources was determined using the Cell Counting Kit-8 (CCK-8, Dojindo Molecular Technology, Japan). MSCs were plated at a density of 2,000 cells per well in 96-well plates in standard culture medium. After 4 hours of incubation, 10 μL of CCK-8 was added to each well, and the plates were incubated at 37 °C. Optical density (OD) was measured every 24 hours with a spectrophotometer (*Multiskan GO*, Thermo Scientific) at 450 nm. Cell viability was calculated relative to the control.

In vitro differentiation assay for MSCs. AM-, CP-, DP- and UC-derived MSCs were differentiated into adipocytes, osteoblasts and chondrocytes after three passages as follows. In brief, for adipogenic, osteogenic or chondrogenic differentiation, MSCs from all sources were seeded into 12-well plates at 200,000 cells per well and were maintained in standard culture medium until confluency. Cells were exposed to adipogenic, osteogenic or chondrogenic induction medium (All from Gibco, Life Technologies, Grand Island, USA) for 21 days. Cells were fixed in 4% paraformaldehyde. To assess adipogenic differentiation, lipid droplets of differentiated cells were stained using oil red O. To assess osteogenic differentiation, cells were stained with alizarin red S. To assess chondrogenic differentiation, cells were stained with alcian blue. Control cells were maintained in standard culture medium over the same time period (All stains were procured from Sigma Aldrich, St Louis, USA). The stained plates were observed under an inverted phase contrast microscope (Leica DMI3000 B, Leica Microsystems Inc., Germany) and the images were captured using Leica Application Suite Version 3.8.0 software.

Karyotype analysis. To analyse the karyotype of the AM-, CP-, DP- and UC-derived MSCs from the same placenta (male new-born), cell division was blocked at metaphase with 0.1 $\mu\text{g}/\text{mL}$ colcemid (Calbiochem, Germany) for 2 hours at 37 °C. The cells were washed and trypsinized, resuspended in 0.075 M KCl, incubated for 20 minutes at 37 °C, and fixed with methanol and acetic acid (3:1). G band standard staining was used to visualize the chromosomes. At least 20 metaphase-nuclei were detected in each sample. The cells in metaphase were analysed and reported on by a certified cytogenetic laboratory according to the International System for Human Cytogenetic Nomenclature.

Quantification of secreted factors. Culture supernatants were generated as follows. Cells were seeded in standard culture medium at a density of 10,000 cells/cm². After 72 hours, cell-free supernatants were collected and were stored at -80 °C. The levels of hepatocyte growth factor (HGF), angiopoietin-1 (Ang-1), vascular endothelial growth factor (VEGF), vascular cell adhesion molecule-1 (VCAM-1), insulin-like growth factor I (IGF-I), prostaglandin E2 (PGE2) and transforming growth factor beta 1 (TGF- β 1) were measured using the respective ELISA kit (Bio-Rad) according to the manufacturer's protocol.

Statistical analysis. Statistical analyses were performed using GraphPad Prism version 5.0 (California, USA). Comparisons of parameters for more than three groups were made by one-way analysis of variance (ANOVA) followed by Tukey's test. Parametric data are expressed as the means \pm standard deviation (SD). A value of $P < 0.05$ was considered statistically significant.

References

1. Abumaree, M. H. *et al.* Phenotypic and functional characterization of mesenchymal stem cells from chorionic villi of human term placenta. *Stem cell reviews* **9**, 16–31, <https://doi.org/10.1007/s12015-012-9385-4> (2013).
2. Castrechini, N. M. *et al.* Decidua parietalis-derived mesenchymal stromal cells reside in a vascular niche within the choriodecidua. *Reproductive sciences* **19**, 1302–1314, <https://doi.org/10.1177/1933719112450334> (2012).
3. In 't Anker, P. S. *et al.* Isolation of mesenchymal stem cells of fetal or maternal origin from human placenta. *Stem cells* **22**, 1338–1345, <https://doi.org/10.1634/stemcells.2004-0058> (2004).
4. Yen, B. L. *et al.* Isolation of multipotent cells from human term placenta. *Stem cells* **23**, 3–9, <https://doi.org/10.1634/stemcells.2004-0098> (2005).
5. Kusuma, G. D. *et al.* Mesenchymal stem cells reside in a vascular niche in the decidua basalis and are absent in remodelled spiral arterioles. *Placenta* **36**, 312–321, <https://doi.org/10.1016/j.placenta.2014.12.014> (2015).
6. Miao, Z. *et al.* Isolation of mesenchymal stem cells from human placenta: comparison with human bone marrow mesenchymal stem cells. *Cell biology international* **30**, 681–687, <https://doi.org/10.1016/j.cellbi.2006.03.009> (2006).
7. Ilancheran, S., Moodley, Y. & Manuelpillai, U. Human fetal membranes: a source of stem cells for tissue regeneration and repair? *Placenta* **30**, 2–10, <https://doi.org/10.1016/j.placenta.2008.09.009> (2009).
8. Manuelpillai, U., Moodley, Y., Borlongan, C. V. & Parolini, O. Amniotic membrane and amniotic cells: potential therapeutic tools to combat tissue inflammation and fibrosis? *Placenta* **32**(Suppl 4), S320–325, <https://doi.org/10.1016/j.placenta.2011.04.010> (2011).
9. Nekanti, U. *et al.* Optimization and scale-up of Wharton's jelly-derived mesenchymal stem cells for clinical applications. *Stem cell research* **5**, 244–254, <https://doi.org/10.1016/j.scr.2010.08.005> (2010).
10. Pappa, K. I. & Anagnou, N. P. Novel sources of fetal stem cells: where do they fit on the developmental continuum? *Regenerative medicine* **4**, 423–433, <https://doi.org/10.2217/rme.09.12> (2009).
11. Abomaray, F. M. *et al.* Phenotypic and Functional Characterization of Mesenchymal Stem/Multipotent Stromal Cells from Decidua Basalis of Human Term Placenta. *Stem cells international* **2016**, 5184601, <https://doi.org/10.1155/2016/5184601> (2016).
12. Yang, Z. X. *et al.* CD106 identifies a subpopulation of mesenchymal stem cells with unique immunomodulatory properties. *PLoS one* **8**, e59354, <https://doi.org/10.1371/journal.pone.0059354> (2013).
13. Abumaree, M. H. *et al.* Phenotypic and Functional Characterization of Mesenchymal Stem/Multipotent Stromal Cells From Decidua Parietalis of Human Term Placenta. *Reproductive sciences* **23**, 1193–1207, <https://doi.org/10.1177/1933719116632924> (2016).

14. Wang, L. *et al.* Characterization of placenta-derived mesenchymal stem cells cultured in autologous human cord blood serum. *Molecular medicine reports* **6**, 760–766, <https://doi.org/10.3892/mmr.2012.1000> (2012).
15. Yamahara, K. *et al.* Comparison of angiogenic, cytoprotective, and immunosuppressive properties of human amnion- and chorion-derived mesenchymal stem cells. *PLoS one* **9**, e88319, <https://doi.org/10.1371/journal.pone.0088319> (2014).
16. Chen, G. *et al.* Comparison of biological characteristics of mesenchymal stem cells derived from maternal-origin placenta and Wharton's jelly. *Stem cell research & therapy* **6**, 228, <https://doi.org/10.1186/s13287-015-0219-6> (2015).
17. Hwang, J. H. *et al.* Comparison of cytokine expression in mesenchymal stem cells from human placenta, cord blood, and bone marrow. *Journal of Korean medical science* **24**, 547–554, <https://doi.org/10.3346/jkms.2009.24.4.547> (2009).
18. Asgari, H. R. *et al.* Comparison of Human Amniotic, Chorionic, and Umbilical Cord Multipotent Mesenchymal Stem Cells Regarding Their Capacity for Differentiation Toward Female Germ Cells. *Cellular reprogramming* **19**, 44–53, <https://doi.org/10.1089/cell.2016.0035> (2017).
19. Heo, J. S., Choi, Y., Kim, H. S. & Kim, H. O. Comparison of molecular profiles of human mesenchymal stem cells derived from bone marrow, umbilical cord blood, placenta and adipose tissue. *International journal of molecular medicine* **37**, 115–125, <https://doi.org/10.3892/ijmm.2015.2413> (2016).
20. Dabrowski, F. A. *et al.* Comparison of the paracrine activity of mesenchymal stem cells derived from human umbilical cord, amniotic membrane and adipose tissue. *The journal of obstetrics and gynaecology research*, <https://doi.org/10.1111/jog.13432> (2017).
21. Deihim, T., Yazdanpanah, G. & Niknejad, H. Different Light Transmittance and Reflected Regions of Human Amniotic Membrane That Could Be Crucial for Corneal Tissue Engineering. *Cornea* **35**, 997–1003, <https://doi.org/10.1097/ICO.0000000000000867> (2016).
22. Qin, S. Q. *et al.* Establishment and characterization of fetal and maternal mesenchymal stem/stromal cell lines from the human term placenta. *Placenta* **39**, 134–146, <https://doi.org/10.1016/j.placenta.2016.01.018> (2016).
23. Talwadekar, M. D., Kale, V. P. & Limaye, L. S. Placenta-derived mesenchymal stem cells possess better immunoregulatory properties compared to their cord-derived counterparts—a paired sample study. *Scientific reports* **5**, 15784, <https://doi.org/10.1038/srep15784> (2015).
24. Zhu, Y. *et al.* Placental mesenchymal stem cells of fetal and maternal origins demonstrate different therapeutic potentials. *Stem cell research & therapy* **5**, 48, <https://doi.org/10.1186/scrt436> (2014).
25. Prockop, D. J. & Oh, J. Y. Medical therapies with adult stem/progenitor cells (MSCs): a backward journey from dramatic results *in vivo* to the cellular and molecular explanations. *Journal of cellular biochemistry* **113**, 1460–1469, <https://doi.org/10.1002/jcb.24046> (2012).
26. Prockop, D. J. Repair of tissues by adult stem/progenitor cells (MSCs): controversies, myths, and changing paradigms. *Molecular therapy: the journal of the American Society of Gene Therapy* **17**, 939–946, <https://doi.org/10.1038/mt.2009.62> (2009).
27. Dominici, M. *et al.* Minimal criteria for defining multipotent mesenchymal stromal cells. The International Society for Cellular Therapy position statement. *Cytotherapy* **8**, 315–317, <https://doi.org/10.1080/14653240600855905> (2006).
28. Bianco, P. *et al.* The meaning, the sense and the significance: translating the science of mesenchymal stem cells into medicine. *Nature medicine* **19**, 35–42, <https://doi.org/10.1038/nm.3028> (2013).
29. Wegmeyer, H. *et al.* Mesenchymal stromal cell characteristics vary depending on their origin. *Stem cells and development* **22**, 2606–2618, <https://doi.org/10.1089/scd.2013.0016> (2013).
30. Gurtner, G. C. *et al.* Targeted disruption of the murine VCAM1 gene: essential role of VCAM-1 in chorioallantoic fusion and placentation. *Genes & development* **9**, 1–14 (1995).
31. Ren, G. *et al.* Inflammatory cytokine-induced intercellular adhesion molecule-1 and vascular cell adhesion molecule-1 in mesenchymal stem cells are critical for immunosuppression. *Journal of immunology* **184**, 2321–2328, <https://doi.org/10.4049/jimmunol.0902023> (2010).
32. De Ugarte, D. A. *et al.* Comparison of multi-lineage cells from human adipose tissue and bone marrow. *Cells, tissues, organs* **174**, 101–109, 71150 (2003).
33. Lorenz, K. *et al.* Multilineage differentiation potential of human dermal skin-derived fibroblasts. *Experimental dermatology* **17**, 925–932, <https://doi.org/10.1111/j.1600-0625.2008.00724.x> (2008).
34. Kern, S., Eichler, H., Stoeve, J., Kluter, H. & Bieback, K. Comparative analysis of mesenchymal stem cells from bone marrow, umbilical cord blood, or adipose tissue. *Stem cells* **24**, 1294–1301, <https://doi.org/10.1634/stemcells.2005-0342> (2006).
35. Zhang, X. *et al.* Isolation and characterization of mesenchymal stem cells from human umbilical cord blood: reevaluation of critical factors for successful isolation and high ability to proliferate and differentiate to chondrocytes as compared to mesenchymal stem cells from bone marrow and adipose tissue. *Journal of cellular biochemistry* **112**, 1206–1218, <https://doi.org/10.1002/jcb.23042> (2011).
36. Chen, K. *et al.* Human umbilical cord mesenchymal stem cells hUC-MSCs exert immunosuppressive activities through a PGE2-dependent mechanism. *Clinical immunology* **135**, 448–458, <https://doi.org/10.1016/j.clim.2010.01.015> (2010).
37. Nemeth, K. *et al.* Bone marrow stromal cells use TGF-beta to suppress allergic responses in a mouse model of ragweed-induced asthma. *Proceedings of the National Academy of Sciences of the United States of America* **107**, 5652–5657, <https://doi.org/10.1073/pnas.0910720107> (2010).
38. Di Nicola, M. *et al.* Human bone marrow stromal cells suppress T-lymphocyte proliferation induced by cellular or nonspecific mitogenic stimuli. *Blood* **99**, 3838–3843 (2002).
39. Shizukuda, Y., Tang, S., Yokota, R. & Ware, J. A. Vascular endothelial growth factor-induced endothelial cell migration and proliferation depend on a nitric oxide-mediated decrease in protein kinase Cdelta activity. *Circulation research* **85**, 247–256 (1999).
40. Livingstone, C. Insulin-like growth factor-I (IGF-I) and clinical nutrition. *Clinical science* **125**, 265–280, <https://doi.org/10.1042/CS20120663> (2013).
41. Klopper, J. *et al.* High efficient adenoviral-mediated VEGF and Ang-1 gene delivery into osteogenically differentiated human mesenchymal stem cells. *Microvascular research* **75**, 83–90, <https://doi.org/10.1016/j.mvr.2007.04.010> (2008).
42. Gonzalez, P. L. *et al.* Chorion Mesenchymal Stem Cells Show Superior Differentiation, Immunosuppressive, and Angiogenic Potentials in Comparison With Haploidentical Maternal Placental Cells. *Stem cells translational medicine* **4**, 1109–1121, <https://doi.org/10.5966/sctm.2015-0022> (2015).
43. Du, W. *et al.* VCAM-1+ placenta chorionic villi-derived mesenchymal stem cells display potent pro-angiogenic activity. *Stem cell research & therapy* **7**, 49, <https://doi.org/10.1186/s13287-016-0297-0> (2016).
44. Ding, C. *et al.* Different therapeutic effects of cells derived from human amniotic membrane on premature ovarian aging depend on distinct cellular biological characteristics. *Stem cell research & therapy* **8**, 173, <https://doi.org/10.1186/s13287-017-0613-3> (2017).
45. Beegle, J. R. *et al.* Preclinical evaluation of mesenchymal stem cells overexpressing VEGF to treat critical limb ischemia. *Molecular therapy. Methods & clinical development* **3**, 16053, <https://doi.org/10.1038/mtm.2016.53> (2016).
46. Redaelli, S. *et al.* From cyto-genomic to epigenomic profiles: monitoring the biologic behavior of *in vitro* cultured human bone marrow mesenchymal stem cells. *Stem cell research & therapy* **3**, 47, <https://doi.org/10.1186/scrt138> (2012).

Acknowledgements

We thank He Lin (Sichuan Academy of Medical & Sichuan Provincial People's Hospital, Chengdu, China) for his help in the karyotype analysis. This work was supported by a grant from Sichuan Neo-life Stem Cell Biotech INC., Chengdu, Sichuan, China.

Author Contributions

Q.C. and M.W. conceived the idea. M.W. and R.Z. designed the experiments and analysed the data. M.W., R.Z., Q.Z., Y.C., M.Z. and X.L. performed the experiments. M.W., R.Z. and R.R. participated in discussing the results and in writing the manuscript. All authors reviewed the manuscript.

Additional Information

Supplementary information accompanies this paper at <https://doi.org/10.1038/s41598-018-23396-1>.

Competing Interests: The authors declare no competing interests.

Publisher's note: Springer Nature remains neutral with regard to jurisdictional claims in published maps and institutional affiliations.



Open Access This article is licensed under a Creative Commons Attribution 4.0 International License, which permits use, sharing, adaptation, distribution and reproduction in any medium or format, as long as you give appropriate credit to the original author(s) and the source, provide a link to the Creative Commons license, and indicate if changes were made. The images or other third party material in this article are included in the article's Creative Commons license, unless indicated otherwise in a credit line to the material. If material is not included in the article's Creative Commons license and your intended use is not permitted by statutory regulation or exceeds the permitted use, you will need to obtain permission directly from the copyright holder. To view a copy of this license, visit <http://creativecommons.org/licenses/by/4.0/>.

© The Author(s) 2018